



Meaningful Innovation.

WEEE Number: 80133970

INSTRUCTION MANUAL

LED BEDSIDE LIGHT

TECHNICAL DATA

MODEL	VT-80068
SKU	240026, 240036
WATTS	8W
LUMENS	830 lm
INPUT VOLTAGE	AC:220-240V, 50Hz
BODY TYPE	Aluminium+PC
ON/OFF CYCLES	>15000
USB OUTPUT	DC:5V, 3A/9V, 2A/12V, 1.5A
LED CHIP TYPE	SMD-CREE Chip
BEAM ANGLE	40°
CRI	>80
IP RATING	IP20
LONG LIFE	20,000 Hours
DIMENSION	132x80x132mm

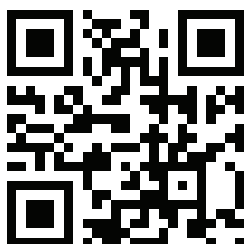


INTRODUCTION & WARRANTY

Thank you for selecting and buying V-TAC product. V-TAC will serve you the best. Please read these instructions carefully before starting the installation and keep this manual handy for future reference. If you have any another query, please contact our dealer or local vendor from whom you have purchased the product. They are trained and ready to serve you at the best. The warranty is valid for 2 years from the date of purchase. The warranty does not apply to damage caused by incorrect installation or abnormal wear and tear. The company gives no warranty against damage to any surface due to incorrect removal and installation of the product. The products are suitable for 10-12 Hours Daily operation. Usage of product for 24 Hours a day would void the warranty. This product is warranted for manufacturing defects only.

WARNING

- Please make sure to turn off the power before starting the installation.
- Installation must be performed by a qualified electrician.
- For Indoor Use only



MULTI-LANGUAGE MANUAL QR CODE

Please scan the QR code to access the manual in multiple languages.



FR

Cet appareil,
ses accessoires
et cordons
se recyclent

À DÉPOSER
EN MAGASIN



À DÉPOSER
EN DÉCHÈTERIE



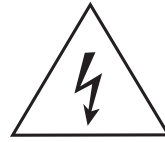
ou

Points de collecte sur www.quefairedemesdechets.fr
Privilégiez la réparation ou le don de votre appareil !

IN CASE OF ANY QUERY/ISSUE WITH THE PRODUCT, PLEASE REACH OUT TO US AT: SUPPORT@V-TAC.EU
FOR MORE PRODUCTS RANGE, INQUIRY PLEASE CONTACT OUR DISTRIBUTOR OR NEAREST DEALERS.
V-TAC EUROPE LTD. BULGARIA, PLOVDIV 4000, BUL.L.KARAVELOW 9B

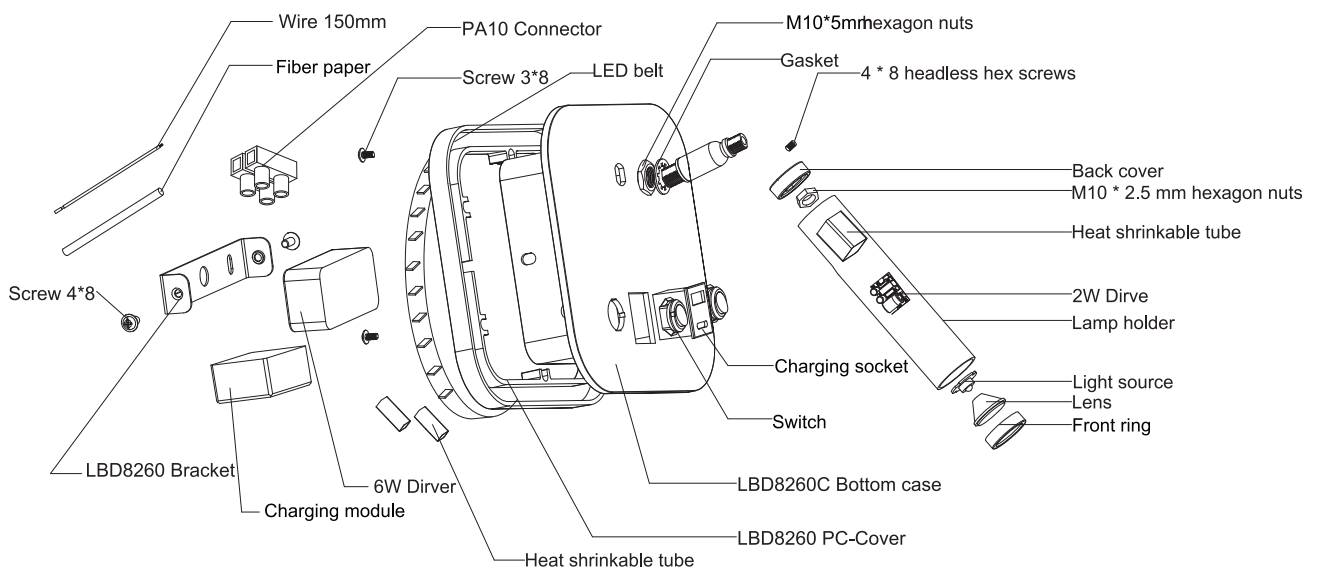
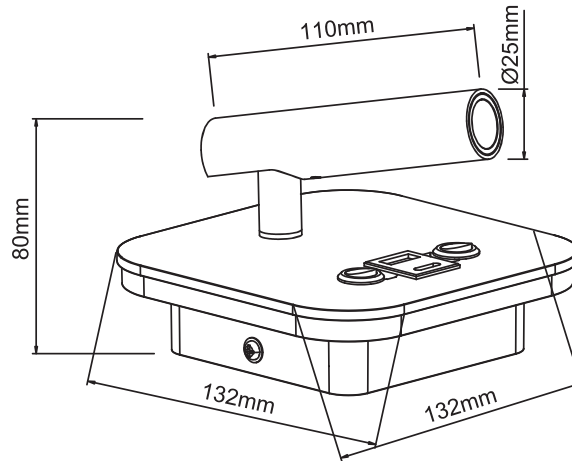


This marking indicates that this product should not be disposed of with other household wastes.



Caution, risk of electric shock.

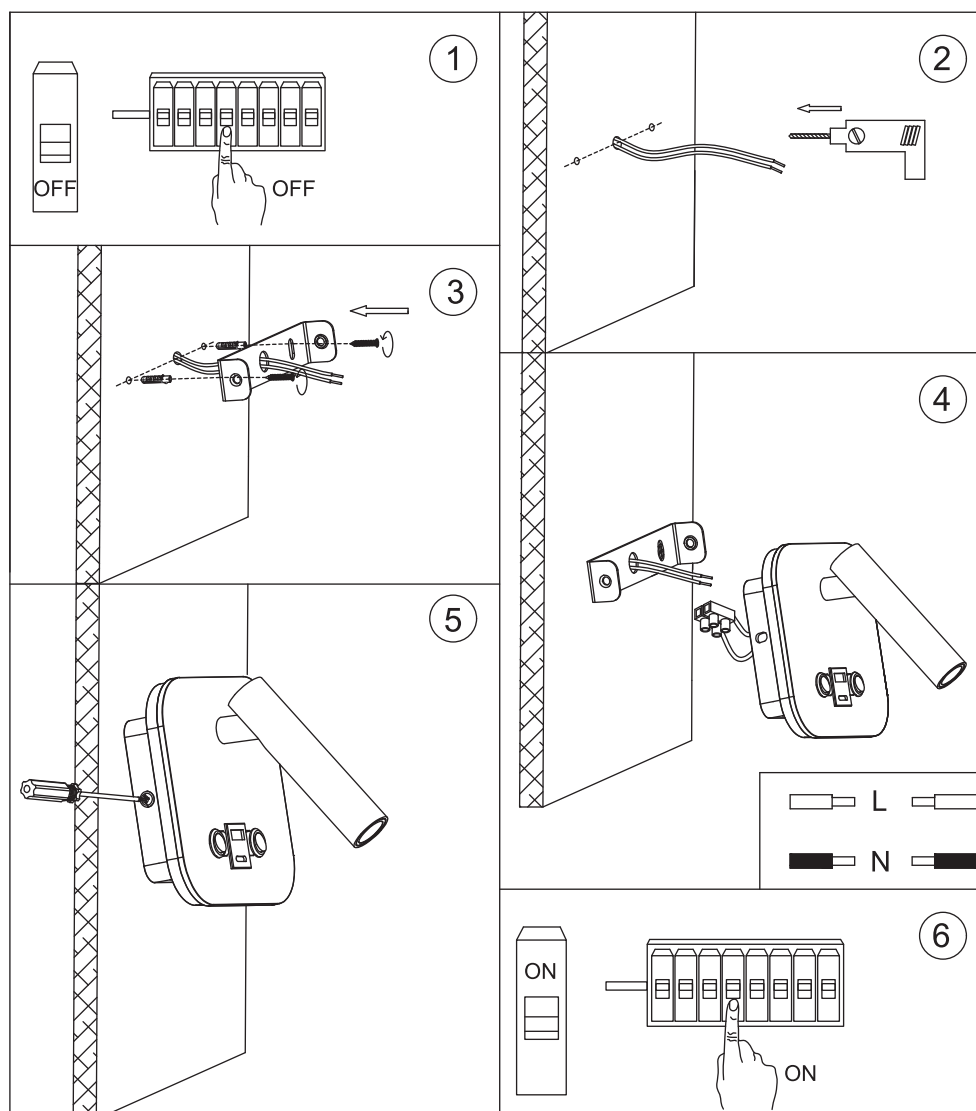
PRODUCT STRUCTURE AND SIZE



INSTALLATION INSTRUCTIONS

1. Please make sure to turn off the power before starting the installation.
2. Mark and drill holes using the bracket as a guide.
3. Fix the mounting bracket to the wall using screws.
4. Connect white to white (L) and black to black (N) wires.
5. Attach the fixture securely to the bracket.
6. Turn on the power and test the lamp.

INSTALLATION DIAGRAM



V-TAC WEST EUROPE LTD. IN CASE OF ANY QUERY/ISSUE WITH THE PRODUCT, PLEASE REACH OUT TO US AT: SUPPORT@V-TAC.EU
FOR MORE PRODUCTS RANGE, INQUIRY PLEASE CONTACT OUR DISTRIBUTOR OR NEAREST DEALERS.
V-TAC WEST EUROPE LTD. GROUND FLOOR, 71 LOWER BAGGOT STREET, DUBLIN 02, IRELAND D02 P593

V-TAC UK LTD. IN CASE OF ANY QUERY/ISSUE WITH THE PRODUCT PLEASE REACH OUT TO US AT
SUPPORT@VTACEXPORTS.COM V-TAC, 5A TUNGSTEN PARK, DOWNS ROAD, WITNEY, OXFORDSHIRE, OX29 0AX