



Meaningful Innovation.

WEEE Number: 80133970

## INSTRUCTION MANUAL

### STAND LAMP

#### TECHNICAL DATA

MODEL	VT-753
SKU	7074, 7075
MAX WATTS	60W
IP RATING	IP44
HOLDER	E27 [Bulb not included]
BODY TYPE	Aluminium + Glass
INPUT POWER	AC: 220-240, 50Hz
DIMENSION	170x403 mm

**03** YEAR  
WARRANTY\*



#### INTRODUCTION & WARRANTY

Thank you for selecting and buying V-TAC product. V-TAC will serve you the best. Please read these instructions carefully before starting the installation and keep this manual handy for future reference. If you have any another query, please contact our dealer or local vendor from whom you have purchased the product. They are trained and ready to serve you at the best. The warranty is valid for 3 years from the date of purchase. The warranty does not apply to damage caused by incorrect installation or abnormal wear and tear. The company gives no warranty against damage to any surface due to incorrect removal and installation of the product. This product is warranted for manufacturing defects only.



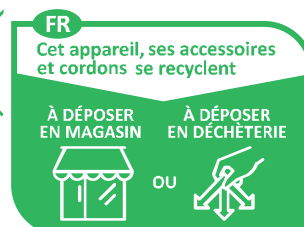
This marking indicates that this product should not be disposed of with other household wastes.



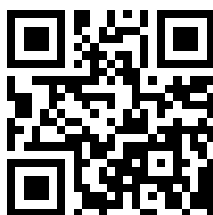
Caution, risk of electric shock.

#### WARNING

1. Please make sure to turn off the power before starting the installation.
2. Installation must be performed by a qualified electrician.
3. Proper grounding should be ensured throughout the installation.
4. User should prepare necessary accessories and spare parts (Not Provided)
5. For Indoor Use only



Points de collecte sur [www.quefairedemesdechets.fr](http://www.quefairedemesdechets.fr)  
Privilégiez la réparation ou le don de votre appareil !

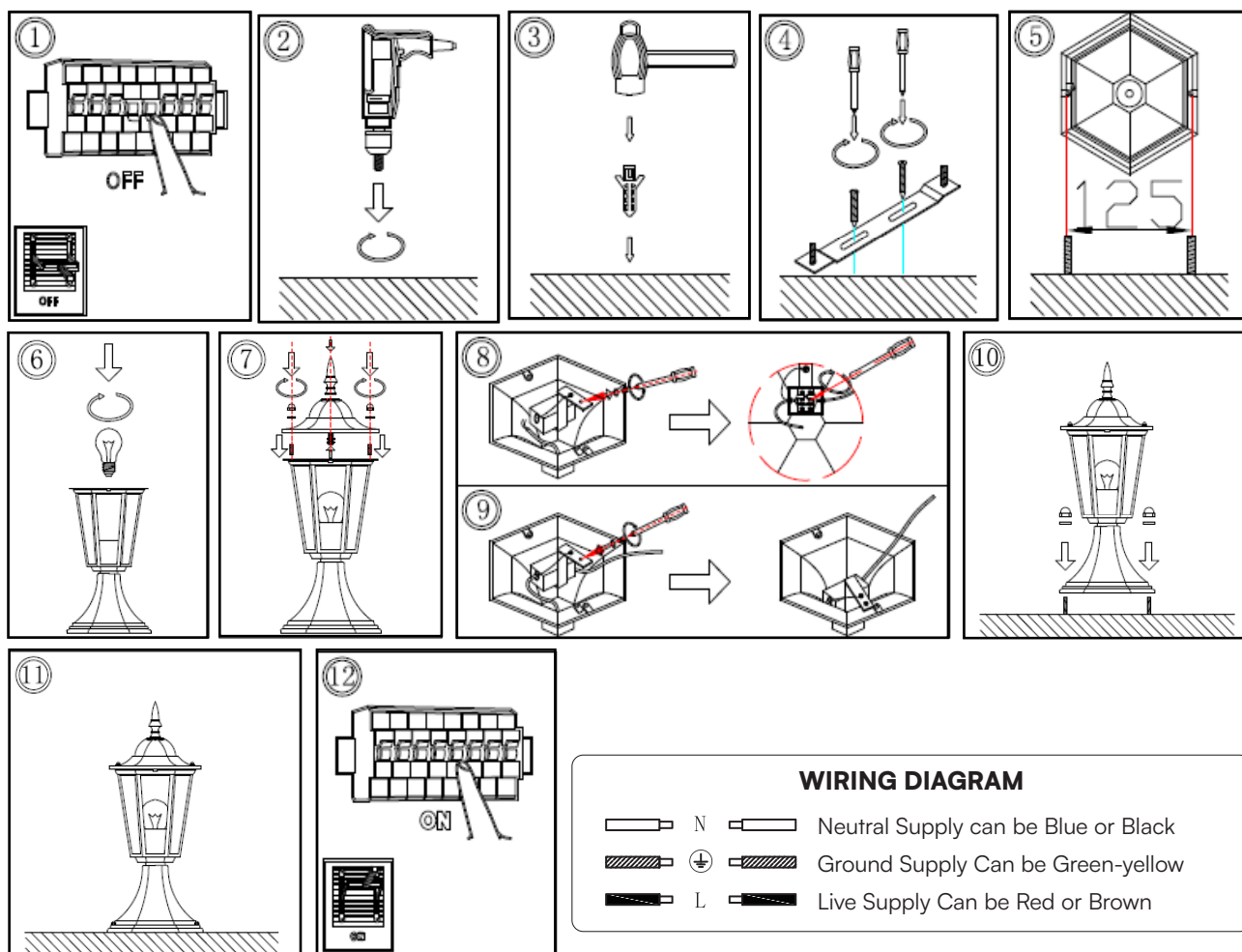


#### MULTI-LANGUAGE MANUAL QR CODE

Please scan the QR code to  
access the manual in multiple languages.

In case of any query/issue with the product, please reach out to us at: [support@v-tac.eu](mailto:support@v-tac.eu)  
For More products range, inquiry please contact our distributor or nearest dealers.  
V-TAC EUROPE LTD. Bulgaria, Plovdiv 4000, bul.L.Karavelow 9B

## INSTALLATION INSTRUCTIONS



1. Turn off the power.
2. Drill a hole in the ground (as per the distance showed on pic 5).
3. Dig the plastic into the hole.
4. Fixing the bracket onto the ground.
5. Open the lamp and install the bulb in the lamp.
6. Close the lamp and tighten the screws.
7. Connect supply leads with terminal brown (L) to brown, blue (N) to blue and greenish- yellow ( $\oplus$ ) to greenish-yellow.
8. Tighten the nuts to fix down the lamp.
9. Turn on the Power.

RoHS



UK  
CA

