



Meaningful Innovation.

WEEE Number: 80133970

INSTRUCTION MANUAL

LED STEP LIGHT

3 IN 1 CCT

TECHNICAL DATA

MODEL	VT-10184
SKU	24010
POWER	3W
INPUT VOLTAGE	AC:220-240V,50Hz
USEFUL LUMENS	170 lm [@Sphere 360°]
BEAM ANGLE	55° / 65°
LIFE SPAN	20,000 Hours
ON/OFF CYCLE	>15,000 Times
CRI	>80
COLOR TEMPERATURE	3000/4200/6400K
CUT OUT SIZE	75mm
BODY TYPE	Aluminium + PC
DIMENSION	Ø81.5 X 48.5mm



02 YEAR
WARRANTY*

IP65
RATING

INTRODUCTION & WARRANTY

Thank you for selecting and buying V-TAC product. V-TAC will serve you the best. Please read these instructions carefully before starting the installation and keep this manual handy for future reference. If you have any another query, please contact our dealer or local vendor from whom you have purchased the product. They are trained and ready to serve you at the best. The warranty is valid for 2 years from the date of purchase. The warranty does not apply to damage caused by incorrect installation or abnormal wear and tear. The company gives no warranty against damage to any surface due to incorrect removal and installation of the product. The products are suitable for 10-12 Hours Daily operation. Usage of product for 24 Hours a day would void the warranty. This product is warranted for manufacturing defects only.



MULTI-LANGUAGE MANUAL QR CODE

Please scan the QR code
to access the manual in
multiple languages.



FR

Cet appareil,
ses accessoires
et cordons
se recyclent

À DÉPOSER
EN MAGASIN



OU

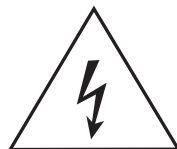
À DÉPOSER
EN DÉCHÈTERIE



Points de collecte sur www.quefairedemesdechets.fr
Privilégiez la réparation ou le don de votre appareil !



This marking indicates that this product should not be disposed of with other household wastes.

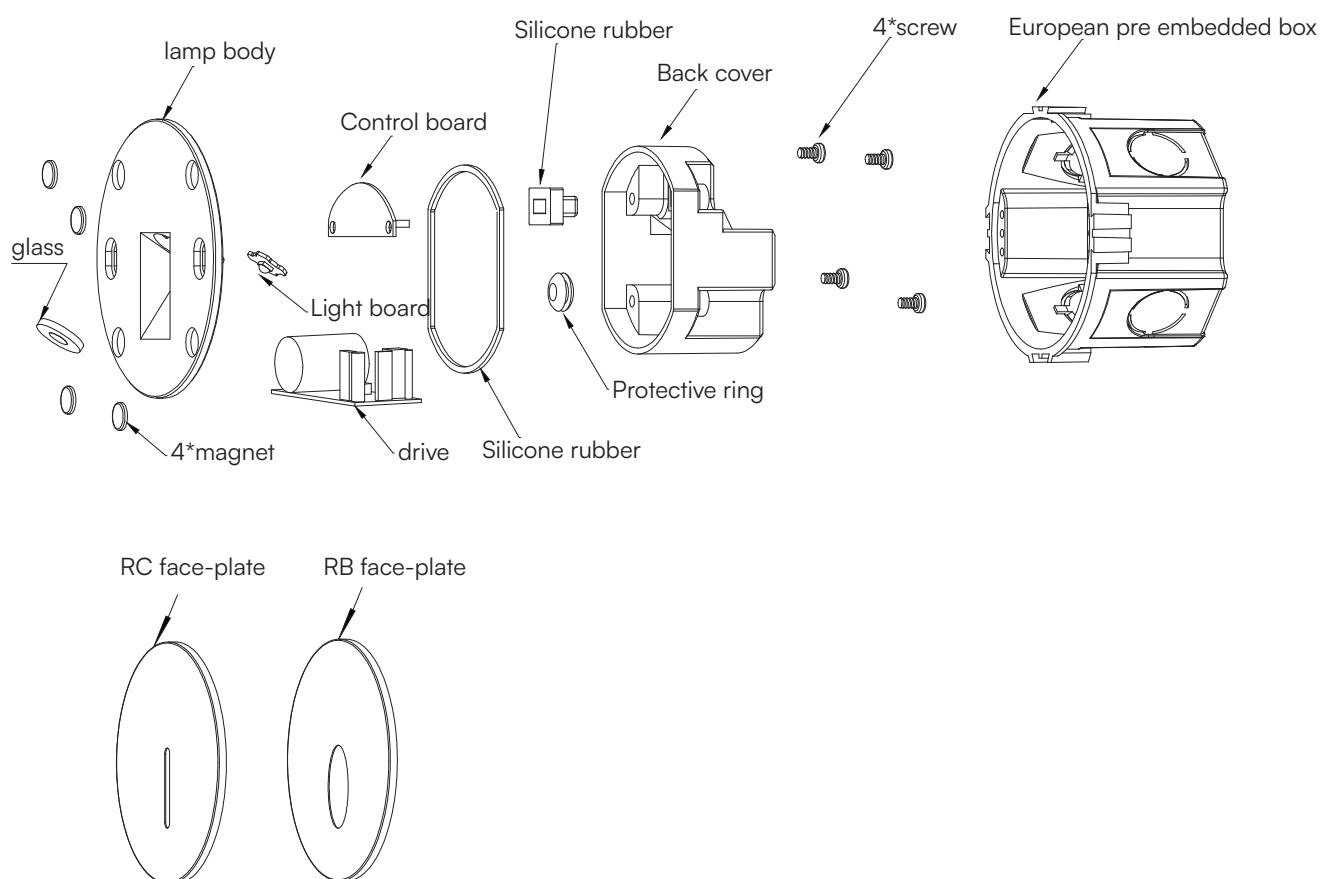


Caution, risk of electric shock.

WARNING

1. Please make sure to turn off the power before starting the installation.
2. Installation must be performed by a qualified electrician.
3. The light source of this luminaire is not replaceable; when the light source reaches its end of life the whole luminaire shall be replaced.
4. Must be connected to waterproof terminal box
5. Proper grounding should be ensured throughout installation.

PRODUCT STRUCTURE AND SIZE



OPTIONAL 4 BEZELS (INCLUDED)



WHITE
Beam Angle:65°
[Already mounted]



WHITE
Beam Angle:55°



BLACK
Beam Angle:65°



BLACK
Beam Angle:55°

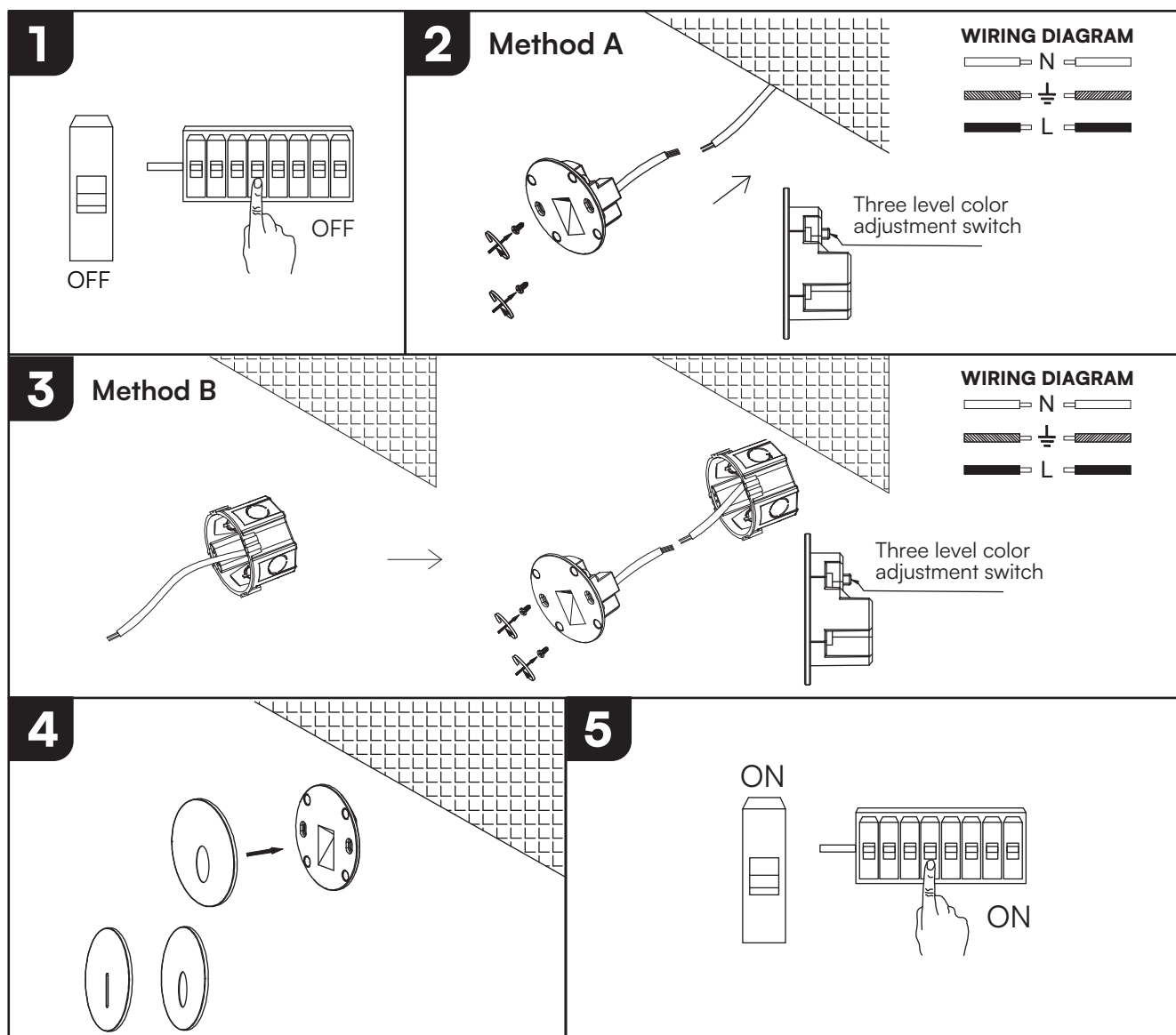
RoHS



UK
CA



INSTALLATION DIAGRAM



INSTALLATION INSTRUCTIONS

1. Turn off the power before starting the installation.
2. For **Method A**: Connect the power supply and set the desired color temperature. Insert the lamp into the ceiling opening and secure it using the provided screws.
3. For **Method B**: First, install the pre-embedded mounting box. Then, connect the power supply, adjust the color temperature, and screw the lighting fixture onto the mounting box.
4. Attach the magnetic cover onto the lamp body and verify the installation.
5. Turn on the power and test the lamp.

V-TAC WEST EUROPE LTD. IN CASE OF ANY QUERY/ISSUE WITH THE PRODUCT, PLEASE REACH OUT TO US AT: SUPPORT@V-TAC.EU FOR MORE PRODUCTS RANGE, INQUIRY PLEASE CONTACT OUR DISTRIBUTOR OR NEAREST DEALERS. V-TAC WEST EUROPE LTD. GROUND FLOOR, 71 LOWER BAGGOT STREET, DUBLIN 02, IRELAND DO2 P593

V-TAC UK LTD. IN CASE OF ANY QUERY/ISSUE WITH THE PRODUCT PLEASE REACH OUT TO US AT SUPPORT@VTACEXPORTS.COM V-TAC, 5A TUNGSTEN PARK, DOWNS ROAD, WITNEY, OXFORDSHIRE, OX29 OAX